



wall covering | rugs | accent ceilings | upholstery | decorative art

RECYCLED  REIMAGINED

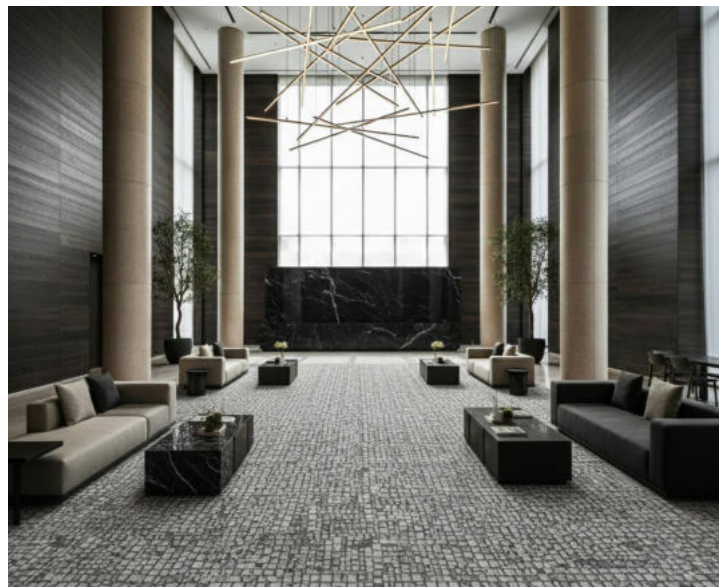
Liora Manné's commitment to sustainability has been a long-standing priority.

All Lamontage® rugs are backed with 100% recycled fibers, making them at least 65% recycled.
Liora Manné's REvolution Collection – REcycled & REimagined – introduces 100% recycled content in greyscale.

Driven to create environmentally-friendly products, the REvolution Collection utilizes a circular production process, making all (RE) patterns 100% recycled, and all (RE)* patterns 70% or higher recycled. The fibers are sourced from recycled plastic bottles. Our REvolution greyscale is created from varying blends of white and charcoal fibers. The (RE)* patterns include non-recycled elements, such as metallic or colored fibers, which reduce the recycled percentage accordingly.



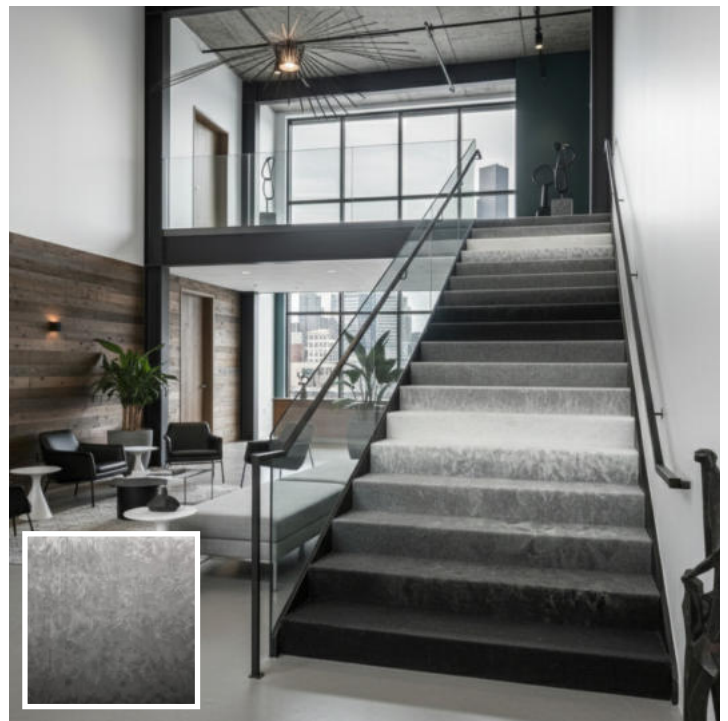
mystic stripe (custom scale) graphite (RE)



marble mosaic camden (RE)



flourish shadow (RE)



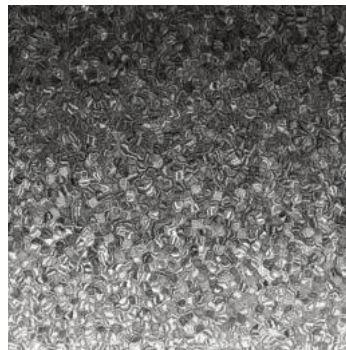
ombré fade shadow (RE)



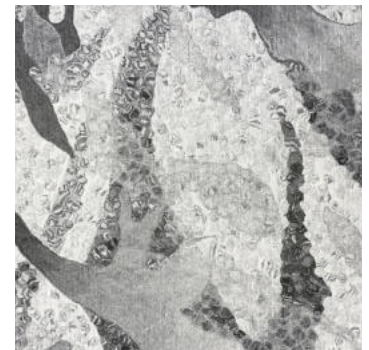
zen agate oyster (RE)



strata stripe cloud (RE)



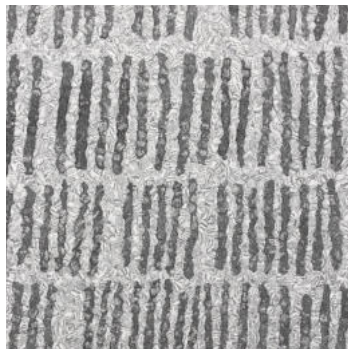
ombré fosseset shadow (RE)



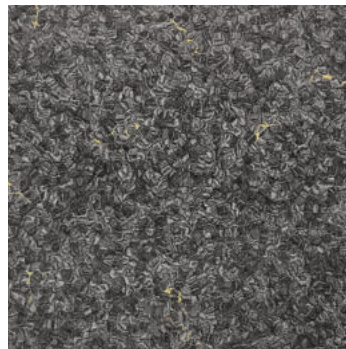
flourish chalk (RE)



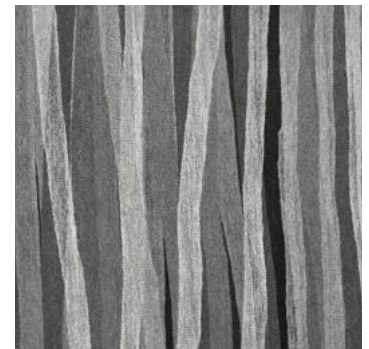
ripples shadow (RE)



bones shadow (RE)



sparkles graphite (RE)*



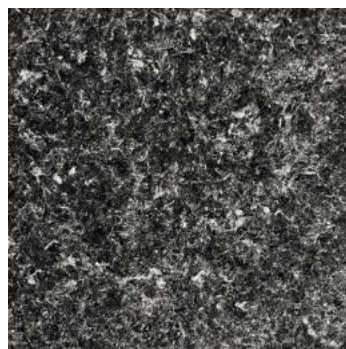
mystic stripe graphite (RE)



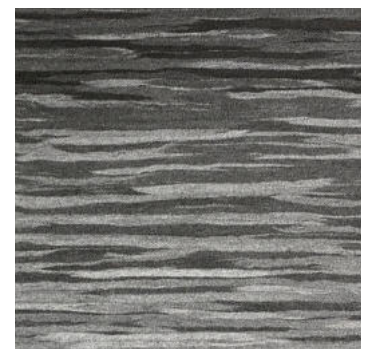
zen wave ombré shadow (RE)



ripples metallic shadow (RE)*



sensations metallic graphite (RE)*



bali stripe slate (RE)



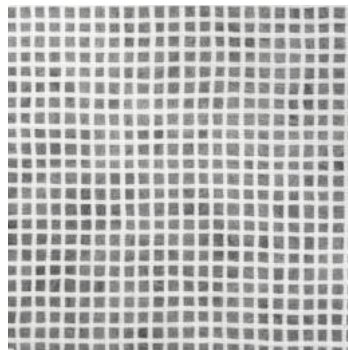
quartz pepper (RE)



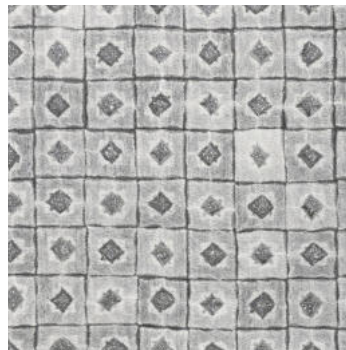
fireworks storm (RE) *



vista metallic silver (RE) *



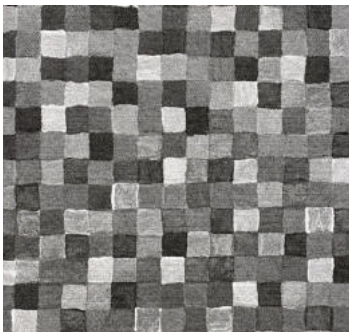
lillecheck dove (RE)



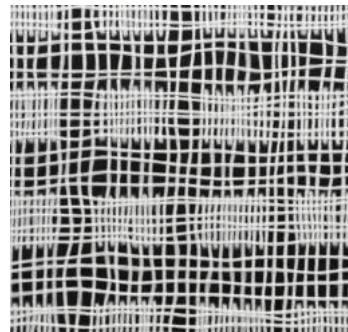
box dumping metallic cloud (RE) *



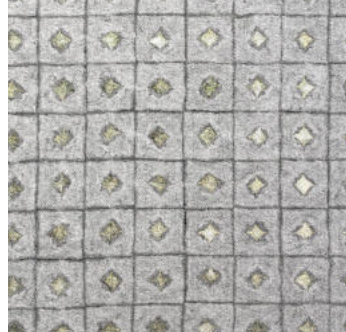
marble mosaic camden (RE)



pom poms pepper (RE)



net (grande scale) graphite (RE) *



box dumping metallic oyster (RE) *



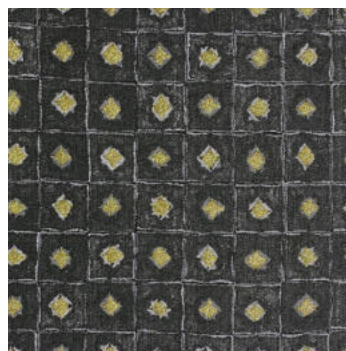
orbit cloud (RE)



ombré shadow (RE)



tweedle dee storm (RE)



box dumping metallic graphite (RE) *

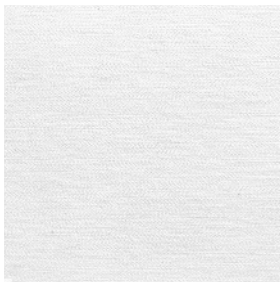


seville shadow (RE)

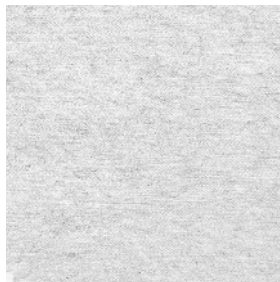


etched channels with pure R48-1 (RE)

RECYCLED REIMAGINED



pure R1-1 (RE)



pure R47-1 (RE)



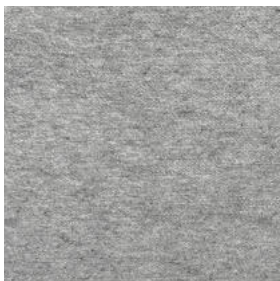
pure R47-2 (RE)



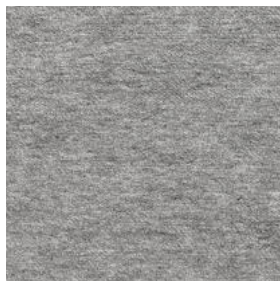
pure R47-3 (RE)



pure R47-4 (RE)



pure R48-1 (RE)



pure R47-5 (RE)



pure R47-6 (RE)



pure R47-8 (RE)



pure R47-7 (RE)



pure R12-3 (RE)



pure R12-7 (RE)



pure R12-8 (RE)



pure R12-10 (RE)

(RE) patterns contain
100% recycled material.

(RE)* patterns contain
70%+ recycled material.