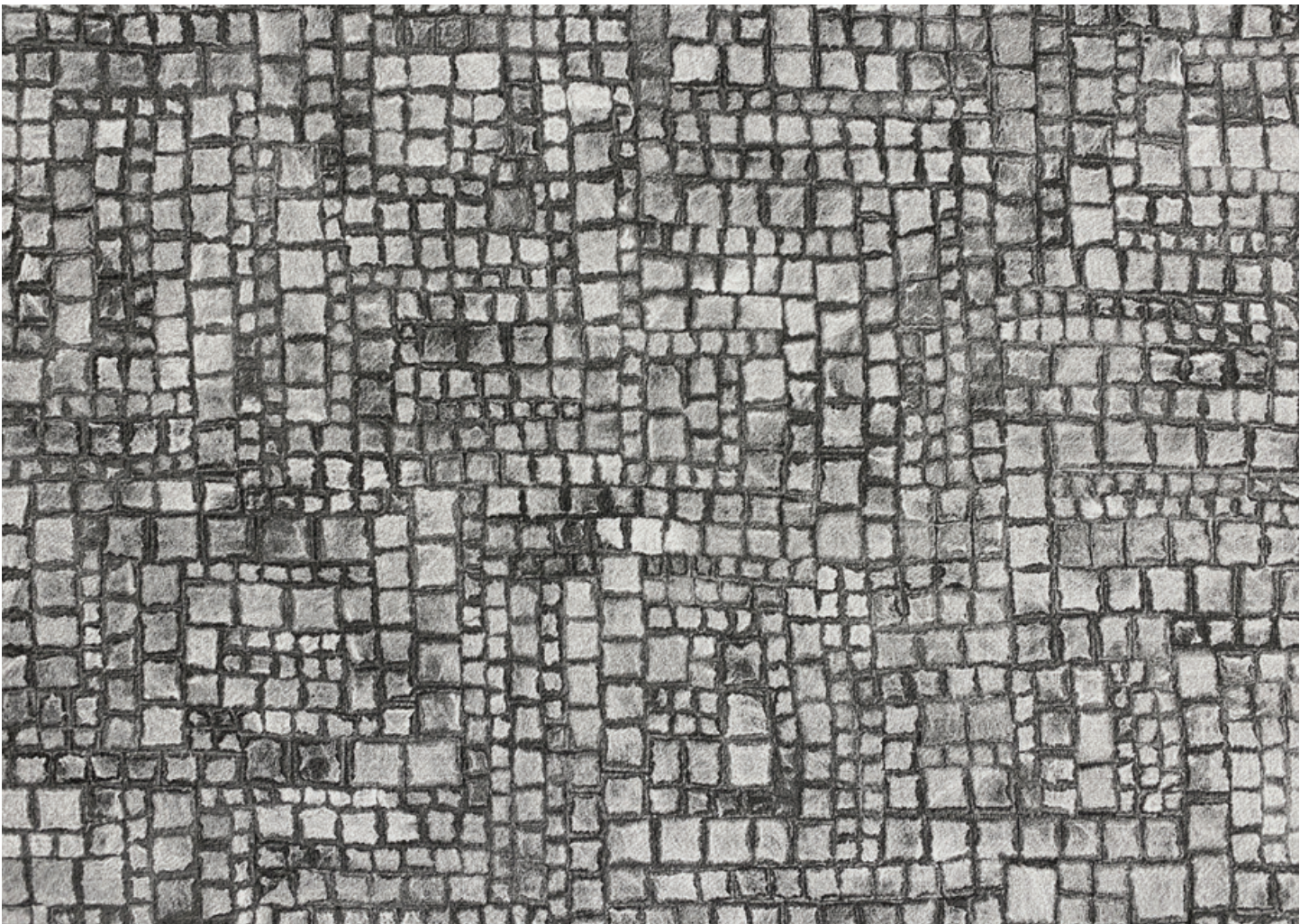


liora manné

INTRODUCES

The REvolution Collection

RECYCLED  REIMAGINED



New York Design Center | 200 Lexington Avenue | Suite 603 | New York, NY 10016
info@lioramanne.com | 212.989.2732 | lioramanne.com

Liora Manné



Born in Israel, educated in the United States and now a true New Yorker, lifestyle products designer Liora Manné has been breaking the rules throughout her entire career. After graduating from Georgia State University with a degree in journalism and drama, Manné took a textile design class at North Carolina State University and never looked back. She earned a master's degree in both textile design and textile engineering before moving to New York, where she first designed textiles for the fashion industry.

She soon found herself eager for a less traditional creative outlet and gravitated toward home fashions—rugs in particular. She founded her namesake company in 1990 and her bold, contemporary colors sparked a revolution in an industry dominated by tradition. Today, Manné's lifestyle collection is featured around the world, including her cutting-edge Lamontage® products, which can be found in institutions like Radio City Music Hall in New York, the Mondrian Hotel in Los Angeles and Brown University in Providence, Rhode Island.

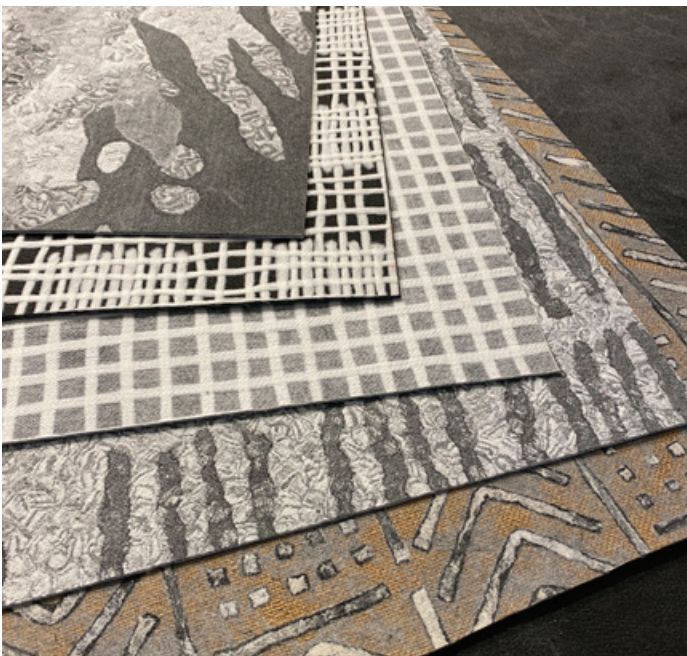
Manné travels the world in search of inspiration for developing groundbreaking products and technologies. But her global involvement reaches beyond her quest for creative catalysts. She has participated in design work for floor coverings that has created job opportunities for women in India and she employs and trains more than 150 women at her Lamontage® factory in China. She is also involved with several nonprofit organizations, including Partnership for the Homeless and The Alpha Workshops, which gives creative people living with HIV/AIDS training and employment in the decorative arts.

The REvolution Collection

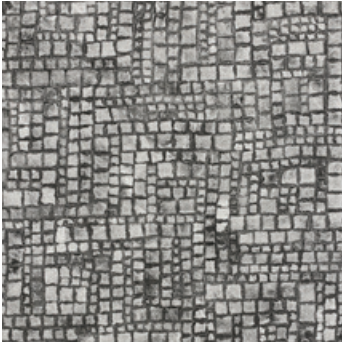
RECYCLED REIMAGINED

Revolutionize your understanding of textiles with the REvolution Collection; REcycled & Reimagined. Driven by the desire to create products in alignment with our eco-systems, this fall Liora Manné debuts her first collection using recycled polyester fibers. A circular process that blends grounding neutrals to create an array of idyllic colors and contemporary patterns, ranging from 70%-100% recycled polyester. All products are treated with Nano Silver particles that make rugs, fabrics and pillows anti-microbial.

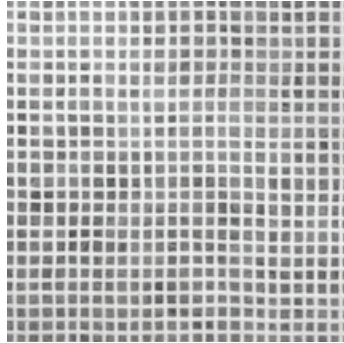
Manné uses her groundbreaking trademarked Lamontage® technique to create this socially conscious collection. The unique needle-punched patterns are made-to-order and the creative applications for high-performance material range from rugs, wall & ceiling coverings, fabric, pillows, decorative art & more. Inventive and eco-friendly, the REvolution Collection reimagines sustainable design.



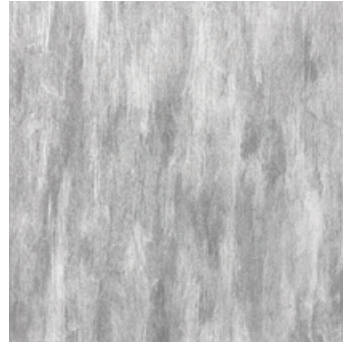
- All Lamontage® patterns are customizable (color, shape, pattern scale, with/without metallic, etc.)
- Patterns and recycled material content percentages can be customized based on client needs
- All Lamontage® rugs contain 65% or more recycled content



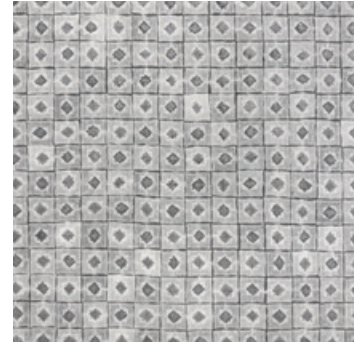
Marble Mosaic - Camden (RE)



Lillecheck - Dove (RE)



Vista Metallic - Silver (RE)*



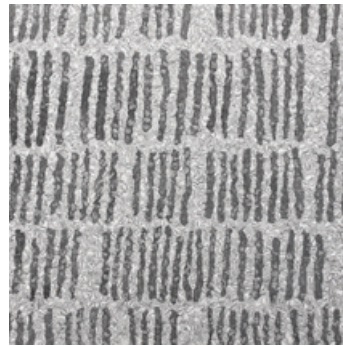
Box Dumping Metallic - Cloud (RE)*



Zen Agate - Oyster (RE)



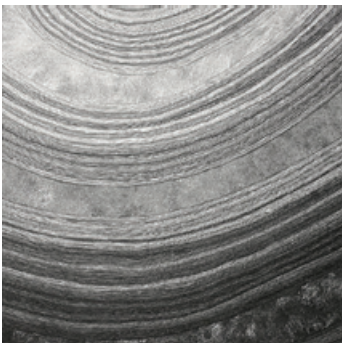
Strata Stripe - Cloud (RE)



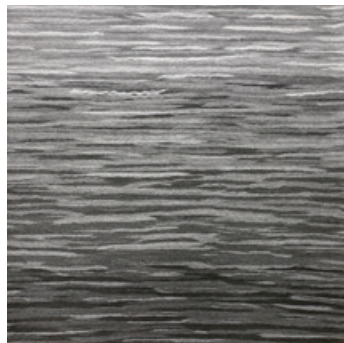
Bones - Shadow (RE)



Bambara Jute - Pepper (RE)*



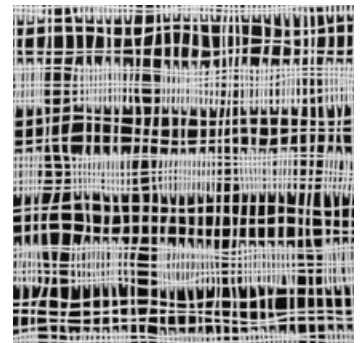
Ripples Metallic - Shadow (RE)*



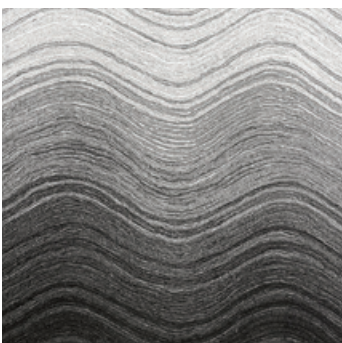
Bali Stripe - Slate (RE)



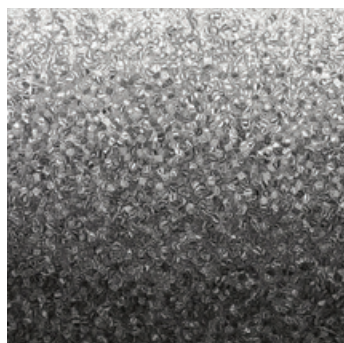
Orbit - Cloud (RE)



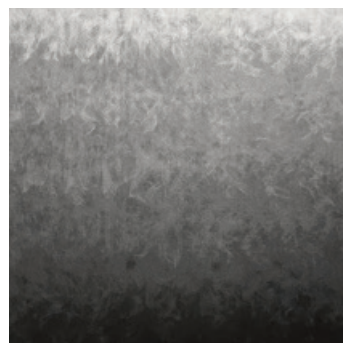
Net (Grande Scale) - Graphite (RE)*



Zen Wave Ombré - Shadow (RE)



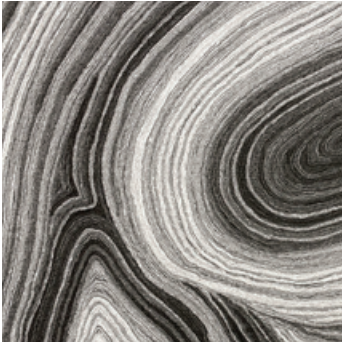
Ombré Fossette - Shadow (RE)



Ombré Fade - Shadow (RE)



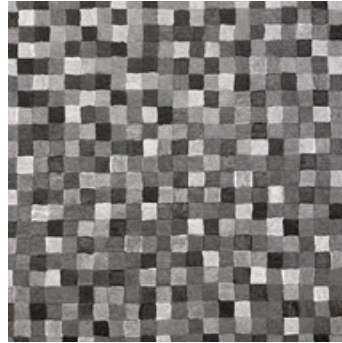
Ombré - Shadow (RE)



Ripples - Shadow (RE)



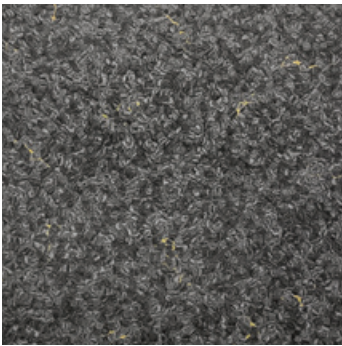
Fireworks - Storm (RE)*



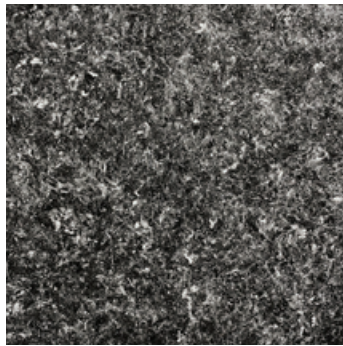
Pom Poms - Pepper (RE)



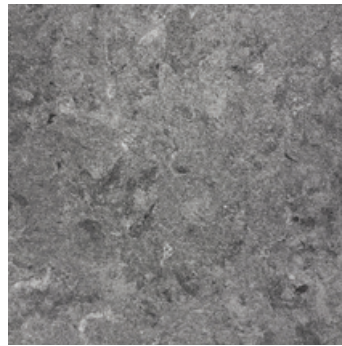
Tweedle Dee - Storm (RE)



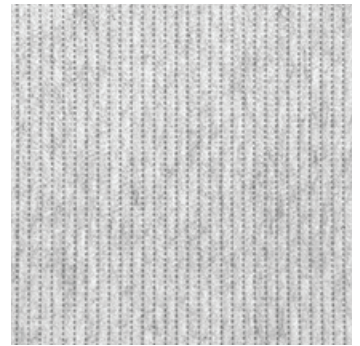
Sparkles - Graphite (RE)*



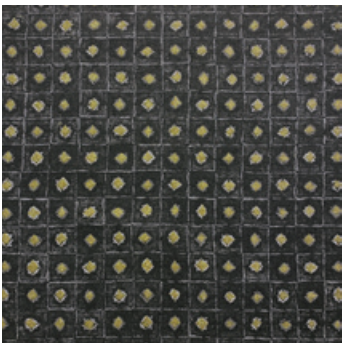
Sensations Metallic - B+W (RE)*



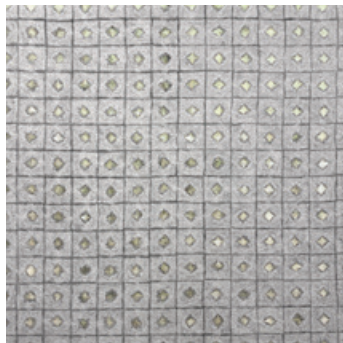
Celestial - Shadow (RE)



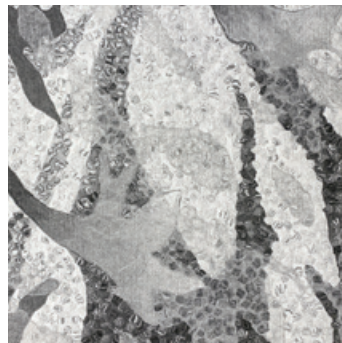
Etched Channels - R47-2 (RE)



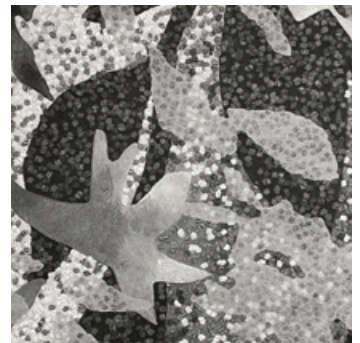
Box Dumping Metallic - Graphite (RE)*



Box Dumping Metallic - Oyster (RE)*



Flourish - Chalk (RE)



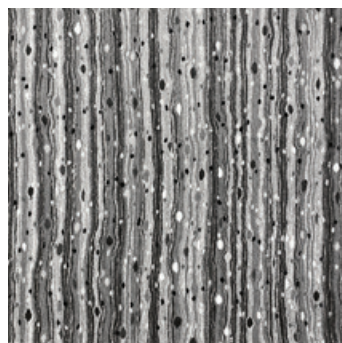
Flourish - Shadow (RE)



Seville - Shadow (RE)



Mystic Stripe - Graphite (RE)



Quartz - Pepper (RE)*



Pure - R1-1 (RE)



Pure - R47-1 (RE)



Pure - R47-2 (RE)



Pure - R47-3 (RE)



Pure - R47-4 (RE)



Pure - R48-1 (RE)



Pure - R47-5 (RE)



Pure - R47-6 (RE)



Pure - R47-8 (RE)



Pure - R47-7 (RE)



Pure - R12-3 (RE)



Pure - R12-7 (RE)



Pure - R12-8 (RE)



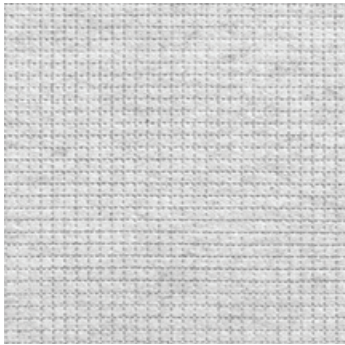
Pure - R12-10 (RE)

ETCHED GRID

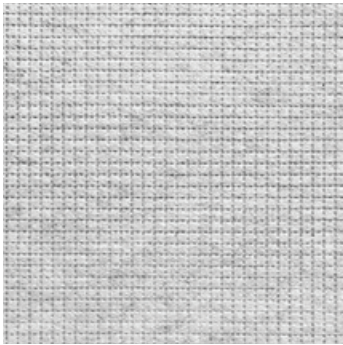
liora manné



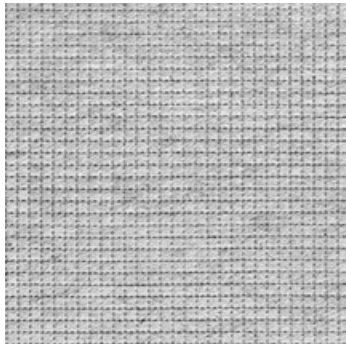
Etched Grid - R1-1 (RE)



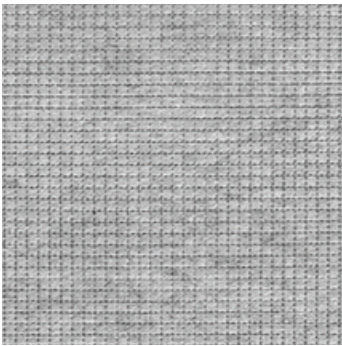
Etched Grid - R47-1 (RE)



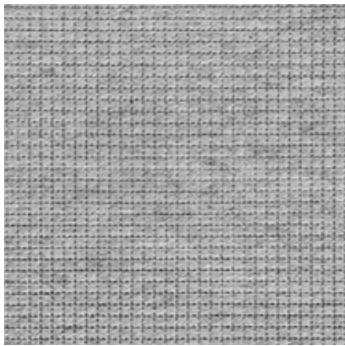
Etched Grid - R47-2 (RE)



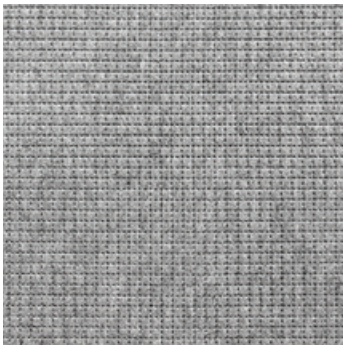
Etched Grid - R47-3 (RE)



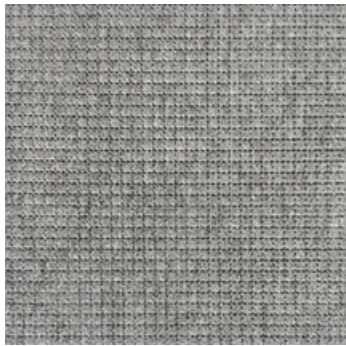
Etched Grid - R47-4 (RE)



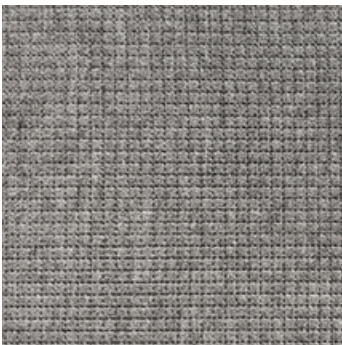
Etched Grid - R48-1 (RE)



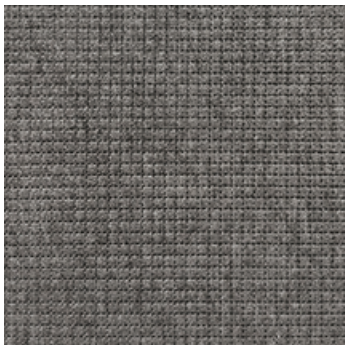
Etched Grid - R47-5 (RE)



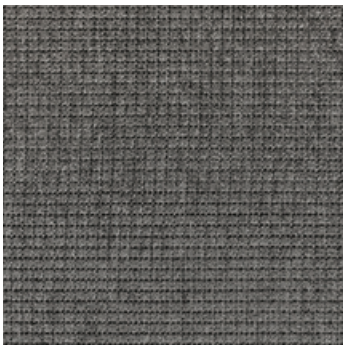
Etched Grid - R47-6 (RE)



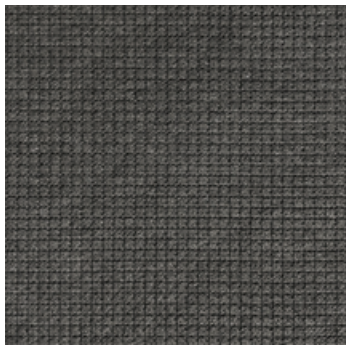
Etched Grid - R47-8 (RE)



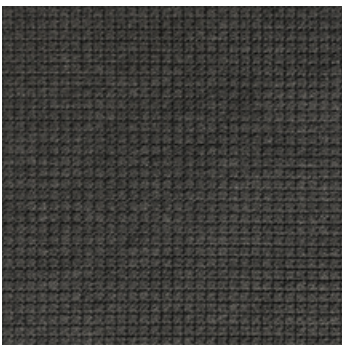
Etched Grid - R47-7 (RE)



Etched Grid - R12-3 (RE)



Etched Grid - R12-7 (RE)



Etched Grid - R12-8 (RE)



Etched Grid - R12-10 (RE)

ETCHED CHANNELS

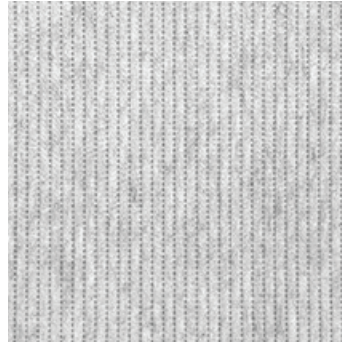
liora manné



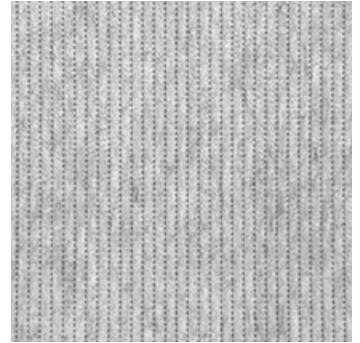
Etched Channels - R1-1 (RE)



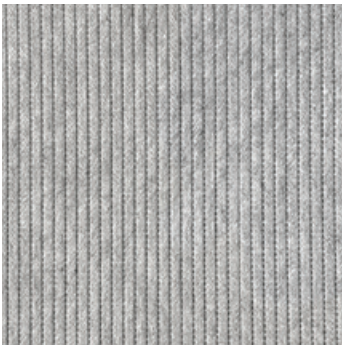
Etched Channels - R47-1 (RE)



Etched Channels - R47-2 (RE)



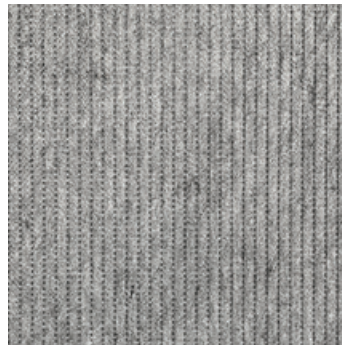
Etched Channels - R47-3 (RE)



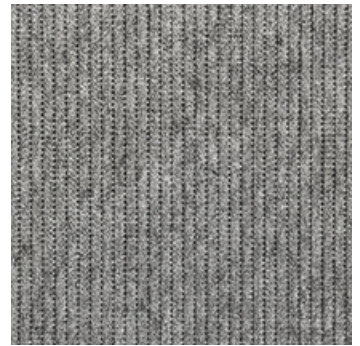
Etched Channels - R47-4 (RE)



Etched Channels - R48-1 (RE)



Etched Channels - R47-5 (RE)



Etched Channels - R47-6 (RE)



Etched Channels - R47-8 (RE)



Etched Channels - R47-7 (RE)



Etched Channels - R12-3 (RE)



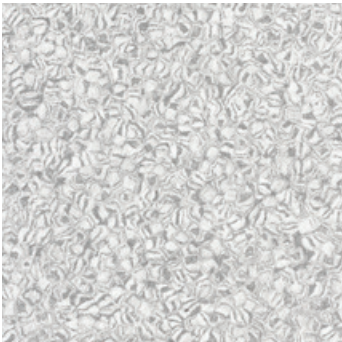
Etched Channels - R12-7 (RE)



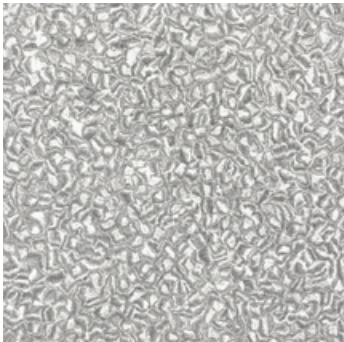
Etched Channels - R12-8 (RE)



Etched Channels - R12-10 (RE)



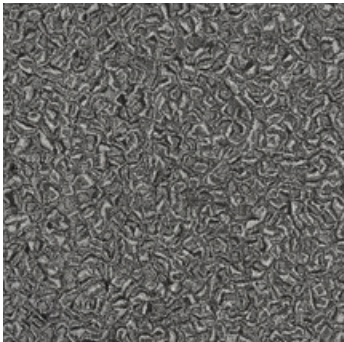
Terrazzo - Dove (RE)



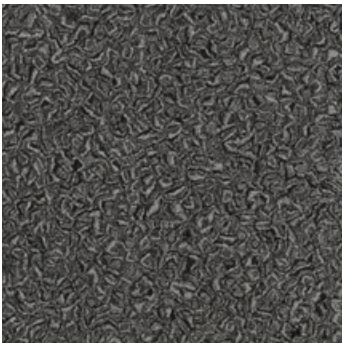
Terrazzo - Coin (RE)



Terrazzo - Pewter (RE)



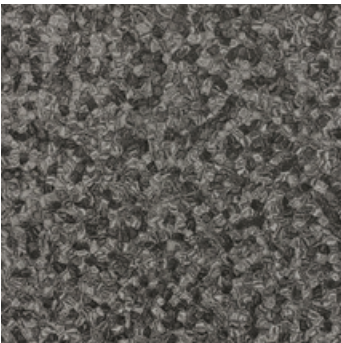
Terrazzo - Steel (RE)



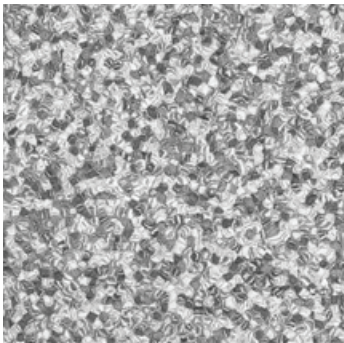
Terrazzo - Stone (RE)



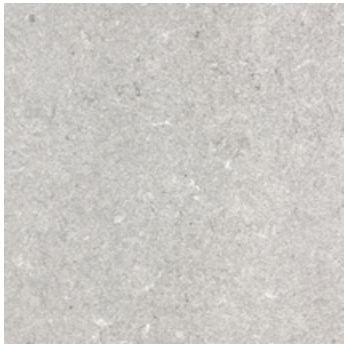
Terrazzo - Graphite (RE)



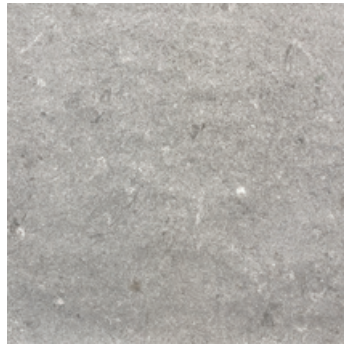
Terrazzo - Shadow (RE)



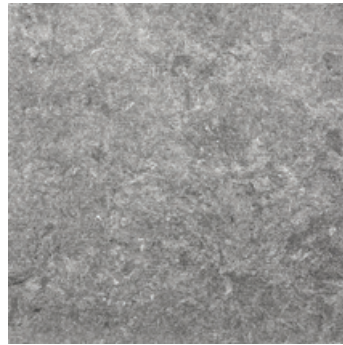
Terrazzo - Pepper (RE)



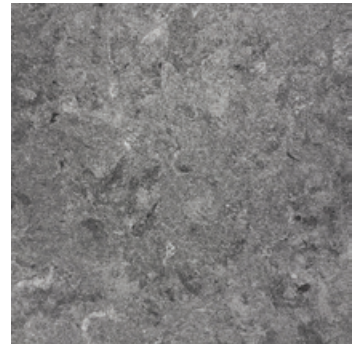
Celestial - Cloud (RE)



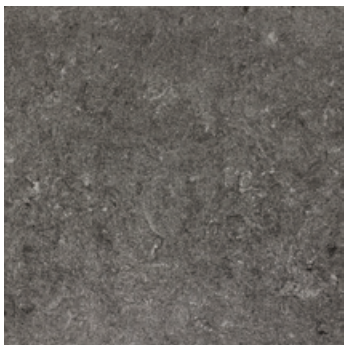
Celestial - Smoke (RE)



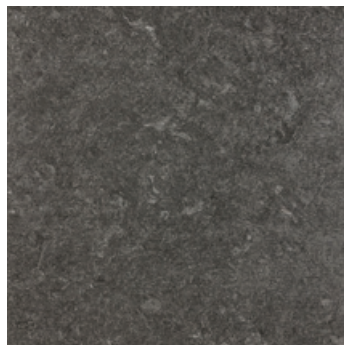
Celestial - Shadow (RE)



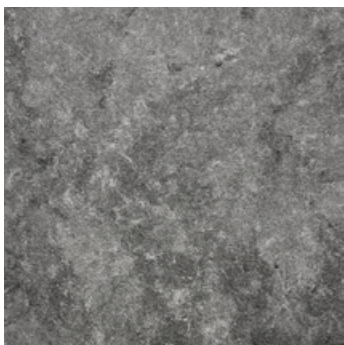
Celestial - Stone (RE)



Celestial - Graphite (RE)



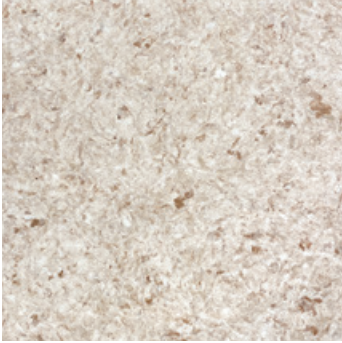
Celestial - Charcoal (RE)



Celestial Metallic - Stone (RE)*

SENSATIONS, ETCHED CHANNELS SENSATIONS,
SENSATIONS METALLIC, SENSATIONS FLECK,
AURA, & ETCHED CHANNELS AURA

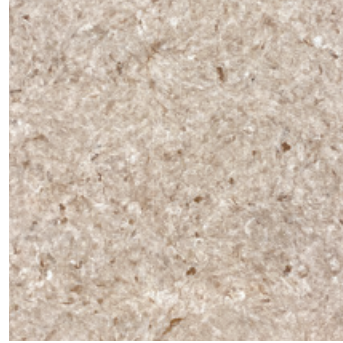
liora manné



Sensations - Oatmeal (RE)*



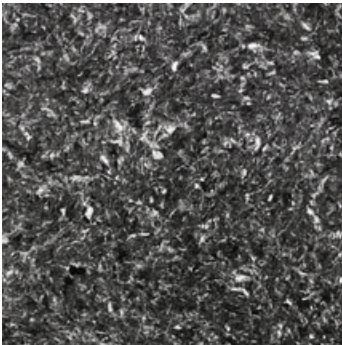
Etched Channels Sensations -
Oatmeal (RE)*



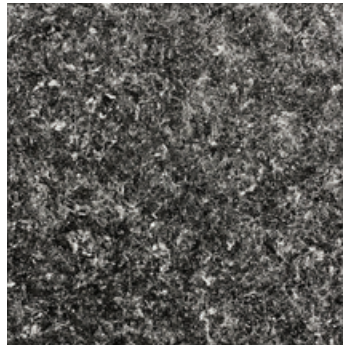
Sensations - Biscotti (RE)*



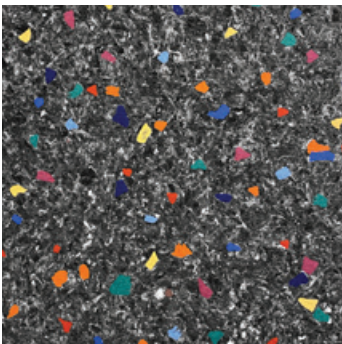
Etched Channels Sensations -
Biscotti (RE)*



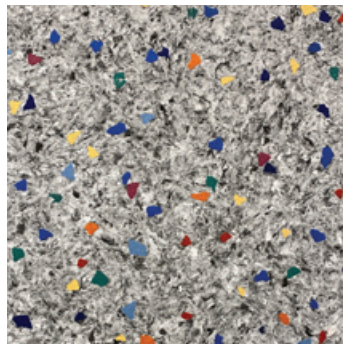
Sensations - B+W (RE)



Sensations Metallic - B+W (RE)*



Sensations Fleck - Tuxedo (RE)*



Sensations Fleck - Penguin (RE)*



Aura - Cashmere (RE)*



Etched Channels Aura -
Cashmere (RE)*



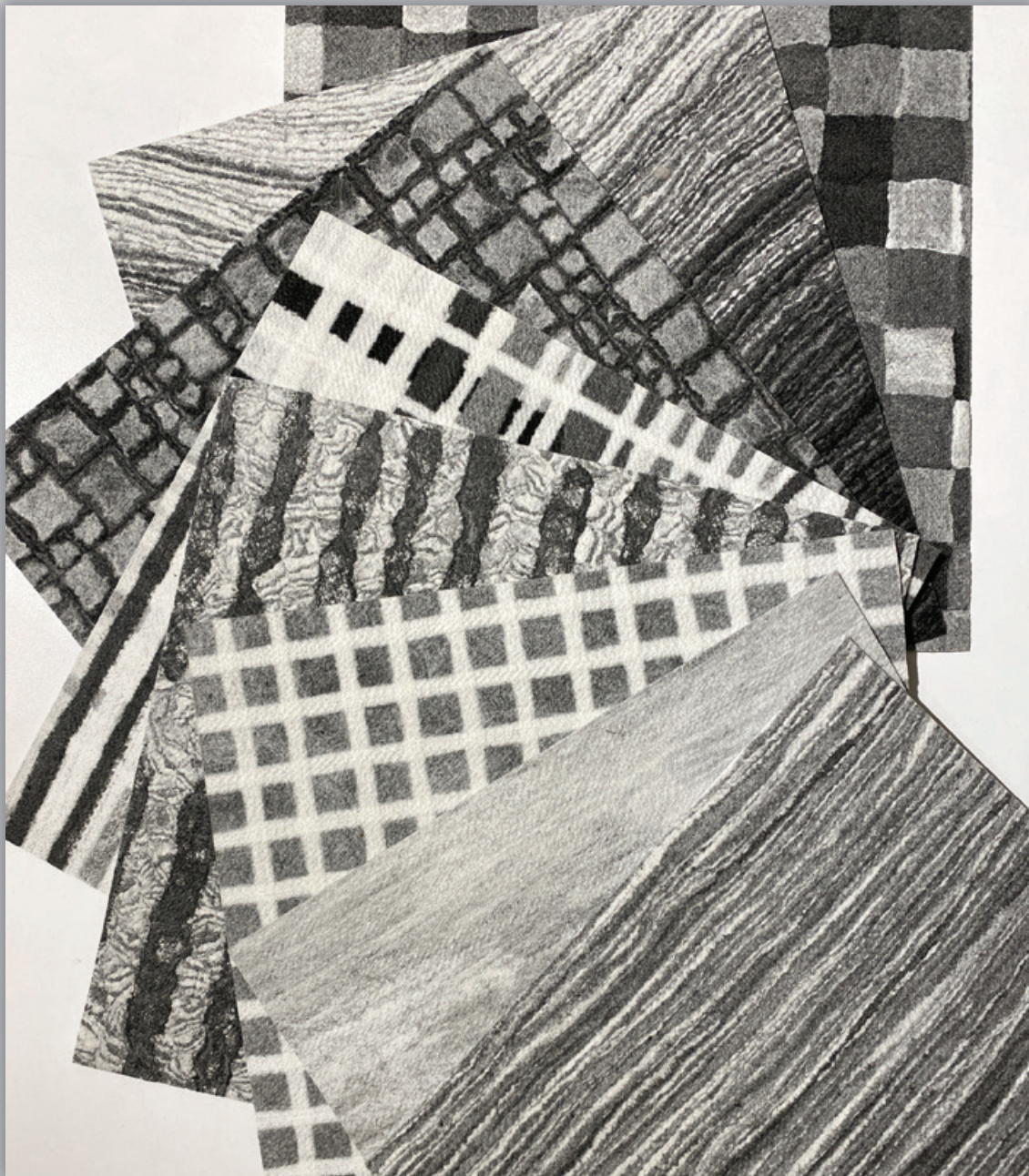
Aura - Alpaca (RE)*



Etched Channels Aura -
Alpaca (RE)*

liora Manné

rugs • wall coverings • fabrics • ceilings • pillows • decorative art



New York Design Center | 200 Lexington Avenue | Suite 603 | New York, NY 10016
info@lioramanne.com | 212.989.2732 | lioramanne.com

All material in this catalogue copyright © Liora Manné. All rights reserved 2022.